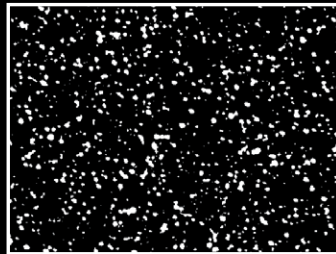


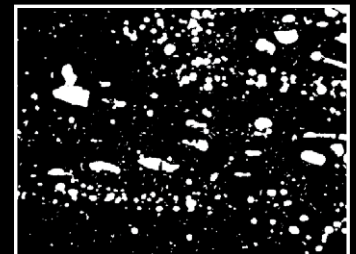
Superior Solutions for Sheet Metal Fabricators

MATE® TOOLING

With M4PM™ Tool Steel



M4PM™



Conventional Tool Steel

PN 2016

WORLDWIDE HEADQUARTERS:

1295 Lund Boulevard, Anoka, Minnesota 55303 USA
Tel +1.763.421.0230 Fax +1.763.421.0285
U.S. Toll Free: Tel +1.800.328.4492 Fax +1.800.541.0285
mate.com

MATE®
M
PRECISION
TOOLING
TRUSTED | QUALITY | SERVICE | SOLUTIONS

MATE® TOOLING LASTS LONGER WITH M4PM™ STEEL

Mate has long offered the most comprehensive range of tooling for all major punch press manufacturers.

Mate's tooling is even better with the **superior performance and longevity of Mate's M4PM™ tool steel**, now standard on the following products:

- All conventional Trumpf-style Size 0 and Size 1 punches
- All QuickLock™ Size 1 punches
- All NEXT™ Size 40 and 76 punches
- All Trumpf-style Size 5 and Size 10 Multi Tool punches
- All Trumpf-style Size 5 and Size 10 Multi Tool dies
- All LongLife™ slitting punch and die inserts
- All Thick Turret C, D and E station slitting inserts
- Xcel™ 3-1/2" station slitting inserts
- Thick Turret cluster inserts from 2mm-20mm
- Trumpf style cluster inserts from 2mm-20mm

Mate M4PM tool steel is available as an option on the following products:

- UltraTEC® A and B station punches
- MXC™ A and B station punches

M4PM™ STEEL

Designed for use in high performance tooling systems, M4PM is a high speed, particle metallurgy steel that combines the chemical composition of M4, particle metallurgy manufacturing and a triple temper heat treatment process.

M4PM offers superior resistance to adhesive and abrasive-wear to maximize the interval between regrinds. The increased alloy content results in higher effective hardness for better wear resistance. A more uniform distribution of smaller carbides results in significantly reduced tool breakage and edge chipping.

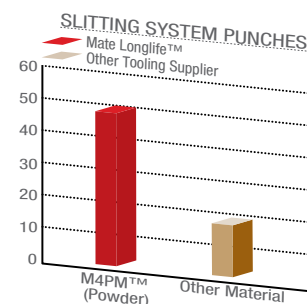
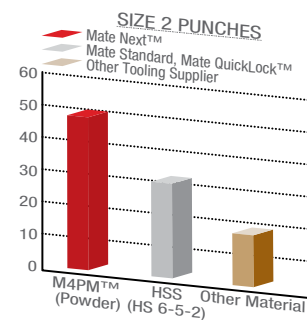
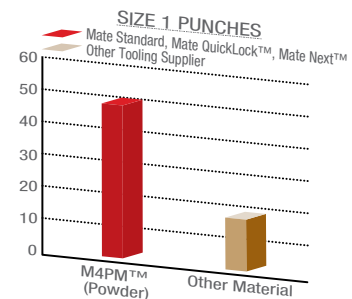
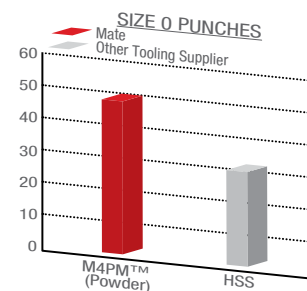
Longer Lasting Tooling

With the clear advantage of M4PM steel, Mate's superior accuracy and precision, and you have a winning combination: reliable, consistent, long-lasting tooling. Compared to conventional high speed steel used by other manufacturers, Mate's Trumpf-style tooling with M4PM has at least 50% or greater wear resistance.*

What does long-lasting tooling mean to you?

- **Increased** machine uptime.
- **Improved** sheet metal products.
- **Reduced** overall tooling costs.
- **Lower** overall production costs.

WEAR RESISTANCE INDEX COMPARISONS



*Wear Resistance index values were developed by an independent metallurgical expert, evaluating both adhesive and abrasive wear characteristics of tool steels at typical levels of hardening.

[Dimensions in Inches(mm)]

