

Tooling Carts Designed For Lean Visual Management

EasyView™ Tooling Carts



mate.com/easyview

Part Number 2009

Worldwide headquarters:

1295 Lund Boulevard, Anoka, Minnesota 55303 USA
Tel 763.421.0230 Fax 763.421.0285 mate.com

MATE®
M
**PRECISION
TOOLING**

TRUSTED | QUALITY | SERVICE | SOLUTIONS

Introducing the latest member of the Mate EasyView™ product family: EasyView™ tooling carts.

Want to organize your tool room? How about managing jobs on the shop floor? Designed for lean visual management, Mate EasyView™ tooling carts can help you reduce costs by increasing your shop's productivity.



Mate EasyView™ carts keep your tooling protected and organized, reducing tool damage and set-up time. Because all tooling is visible to the user, operators can eliminate wasted time looking for the correct tool. Users can quickly locate the correct tool, making it faster and easier for them to make the correct decision every time.

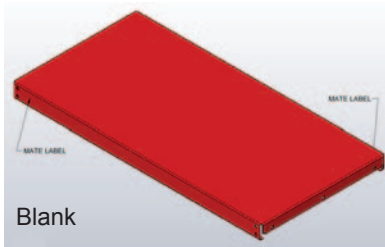
Built from heavy duty 14-gauge steel and powder-coated for durability, these carts can withstand the harshest locations. With shelves available in a number of standard configurations, the Mate EasyView™ cart is completely modular, allowing you to configure it to your specific needs. Shelves are adjustable in 1 inch increments.

The base assembly provides mobility on all EasyView™ carts. Equipped with four 700-pound capacity casters, this base allows you to carry an amazing 2,800 pound load. This means you can stage your jobs ahead of time and locate the cart near the machine, saving you valuable set-up time.

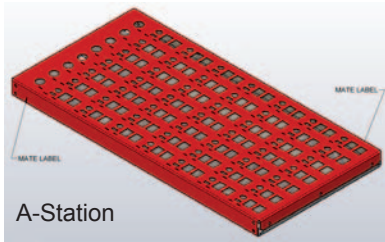
ORDERING INFORMATION:

1. ORDER MOBILE BASE ASSEMBLY	
Part Number	Description
MATE01705	EasyView™ mobile base assembly and standard handle
2. CHOOSE YOUR HEIGHT	
• You can choose either a 36-inch or 48-inch side panels	
Part Number	Description
MATE01702	EasyView™ standard side assembly, 36" tall, powder coated black, qty 2
MATE01703	EasyView™ standard side assembly, 48" tall, powder coated black, qty 2
3. CHOOSE YOUR SHELVES	
• You must select a minimum of 3 shelves for either height to ensure stability of the cart	
Part Number	Description
MATE01704	EasyView™ standard blank shelf
MATE01709	EasyView™ ULTRA® and thick turret A-Station shelf
MATE01710	EasyView™ ULTRA® and thick turret B-Station shelf
MATE01706	EasyView™ ULTRA® and thick turret C-Station shelf
MATE01707	EasyView™ ULTRA® and thick turret D-Station shelf
MATE01708	EasyView™ ULTRA® and thick turret E-Station shelf
MATE01711	EasyView™ thick turret C, D, and E-Station canister/guide shelf
4. ADD OPTIONAL TRAY	
Part Number	Description
MATE01712	EasyView™ side tray (Use to store lubricants, fasteners, assembly tools and more)
5. YOU'RE ON YOUR WAY TO HIGHER PRODUCTIVITY AND INCREASED UPTIME!	

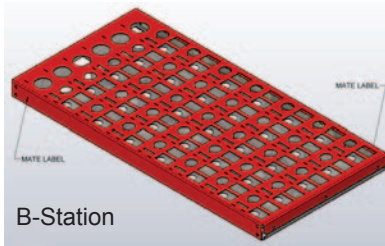




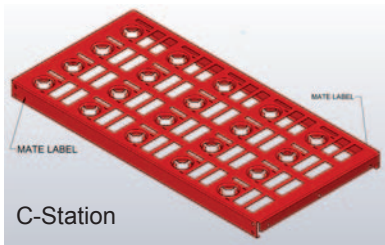
Blank



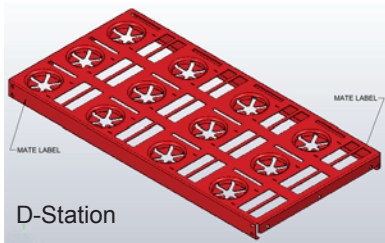
A-Station



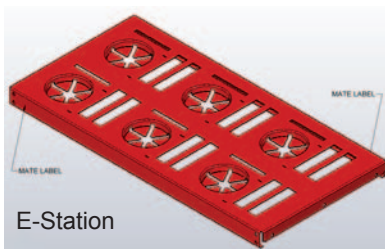
B-Station



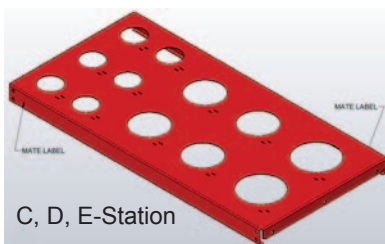
C-Station



D-Station



E-Station



C, D, E-Station

DESCRIPTION

EasyView™ Blank Shelf

- Provide a workbench surface or storage of machine accessories from any system
- Holds up to 500 pounds
- Made from 14-gauge steel
- Powder coated red

EasyView™ ULTRA® and thick turret A-Station shelf

- Features pockets for 49 punches, dies and strippers and 8 guide stations
- Two-piece assembly supports original or ULTRA® punches
- Made from 14-gauge steel
- Powder coated red

EasyView™ ULTRA® and thick turret B-Station shelf

- Features pockets for 35 punches, dies and strippers and 6 guide stations
- Two-piece assembly supports original or ULTRA® punches
- Made from 14-gauge steel
- Powder coated red

EasyView™ ULTRA® and thick turret C-Station shelf

- Features pockets for 20 punches, dies and strippers
- Made from 14-gauge steel
- Powder coated red

EasyView™ ULTRA® and thick turret D-Station shelf

- Features pockets for 12 punches, dies and strippers
- Made from 14-gauge steel
- Powder coated red

EasyView™ ULTRA® and thick turret E-Station shelf

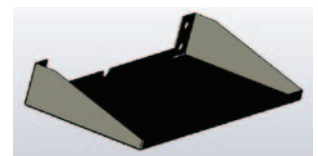
- Features pockets for 6 punches, dies and strippers
- Made from 14-gauge steel
- Powder coated red

EasyView™ thick turret C, D, and E-Station canister/guide shelf

- Features 6 C-station, 4 D-station and 2 E-Station pockets
- Made from 14-gauge steel
- Powder coated red

EasyView™ Side Tray

- Use for storing lubricants, fasteners, assembly tools
- Made from 16 gauge steel
- Powder coated black





MATE®
M
PRECISION
TOOLING
mate.com



The Mate logo is a registered trademark of Mate Precision Tooling Inc. in the USA, Canada, China, Germany, India, Sweden, and U.K.
ULTRA is a registered trademark of Mate Precision Tooling Inc.
EasyView is a trademark of Mate Precision Tooling Inc.

Mate Tooling Lasts Longer

1295 Lund Boulevard, Anoka, Minnesota 55303 USA
Call 800.328.4492 (763.421.0230) • Fax 800.541.0285 (763.421.0285) • mate.com